

Stainless Steel Helical Coupling



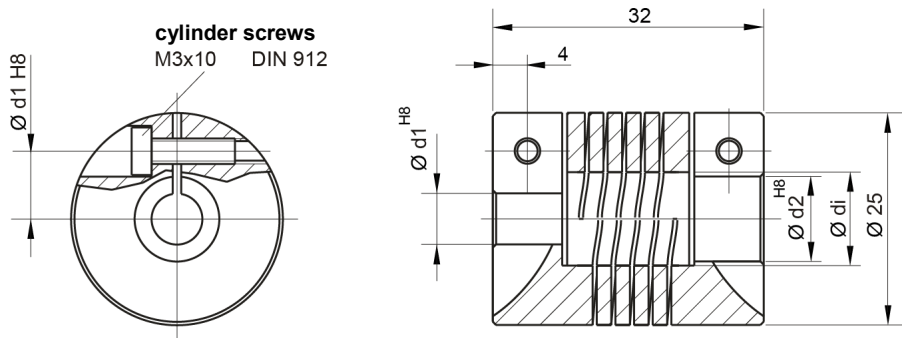
- Heavy Duty stainless steel coupling for harsh environmental condition
- High torsion spring stiffness
- Vibration-reducing, optimum compensation of misalignments
- No moving parts, built from one part
- Material Stainless Steel 1.4104

HEAVY DUTY

TECHNICAL DATA

max. speed	6000 min ⁻¹
max. torque	200 Ncm
max. offset of shafts radial / axial	± 0,35 / ± 0,5 mm
torsion spring stiffness	29 Nm/rad
radial spring stiffness	150 N/mm
moment of inertia	84 gcm ²
max. clamping torque	200 Ncm
temperature range	-50°C ... +180 °C
weight appr.	88g
material	stainless steel
Material cylinder screws	stainless steel

DIMENSIONAL DRAWINGS



Dimensions in mm

ORDERING CODE

Hub diameter (d1/d2)	Ordering code
10/10 mm	3 520 090
Further diameters on request	

Suitable for encoder type RI59, AC59, AC61, RX71, AX71, AR63(DNV), AX65(ATEX)

Flexible Couplings

Shaft encoders must be protected against excessive mechanical stresses, which occur whenever there are angular, axial, or radial misalignments between the machine and shaft encoder shafts.

Our flexible couplings can compensate for this within limits.



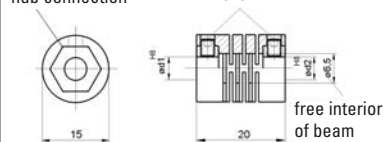
PLASTIC COUPLING

Max. speed	10 000 min ⁻¹
Torque max.	20 Ncm
Moment of inertia	1.1 gcm ²
Torsional spring constant	12 Nm/rad
Max. angular misalignment	±2.5°
Max. shaft misalignment radial / axial	±0.3 mm / ±0.2 mm
Max tightening torque of set screws	70 Ncm
Material	polyamide 6.6 glass-fibre reinforced
Weight approx.	6 g

Plastic coupling

Closed-form hub connection

Set screw M3 x 4
DIN 916



Dimensions in mm

Hub diameter

5/5 mm	Ordering code 3 520 034
5/6 mm	Ordering code 3 520 033
6/6 mm	Ordering code 1 761 026

Suitable for encoder type RI 39

RI 32, RI 41, RI 42 for simple applications

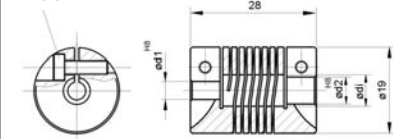


HELICAL COUPLING

Max. speed	6 000 min ⁻¹
Torque max.	80 Ncm
Moment of inertia	8.7 gcm ²
Torsional spring constant	14 Ncm/degree
Max. angular misalignment	±4°
Max. shaft misalignment radial/axial	±0.25 mm / ±0.4 mm
Max tightening torque of set screws	80 Ncm
Material	AlCuMgPb, chromed
Weight	16 g

Helical coupling 19/28

Cylinder screws M3 x 10
DIN 916



Dimensions in mm

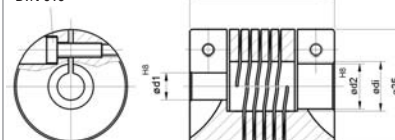
Hub diameter

5/5 mm	Ordering code 3 520 036
5/6 mm	Ordering code 3 520 035
6/6 mm	Ordering code 0 070 653
6/6.35 mm	Ordering code 3 520 051
6.35/6.35 mm	Ordering code 3 520 057

Suitable for encoder type RI 30, RI 32,
RI 36, RI 41, RI 42, RI 58, AC 58

Helical coupling 25/32

Cylinder screws M3 x 10
DIN 916



Dimensions in mm

Hub diameter

6/9.53 mm	Ordering code 3 520 052
6/10 mm	Ordering code 3 520 066
6.35/9.52 mm	Ordering code 3 520 062
10/12 mm	Ordering code 3 520 065
10/10 mm	Ordering code 3 520 074

Suitable for encoder type RI 58, AC 58

Flexible Couplings



ISOLATED DISK COUPLING

Max. speed		12 000 min ⁻¹
Torque max.		60 Ncm
Max. shaft misalignment	radial	±0.3 mm
	axial	±0.4 mm
	angular	±2.5°
Torsional spring constant		30 Nm/rad
Material	Flanges	aluminium, anodized
	Spring disc	plastic, glass-fibre reinforced

Hub diameter

5/6 mm	Ordering code 3 520 080
6/6 mm	Ordering code 3 520 081
6/10 mm	Ordering code 3 520 082
6/6.35 mm	Ordering code 3 520 083
6/9.53 mm	Ordering code 3 520 084
6.35/6.35 mm	Ordering code 3 520 085
7/7 mm	Ordering code 3 520 086
10/6.35 mm	Ordering code 3 520 087
10/10 mm	Ordering code 3 520 088

Suitable for encoder type RI 30, RI 32, RI 36, RI 41, RI 42, RI 58, AC 58

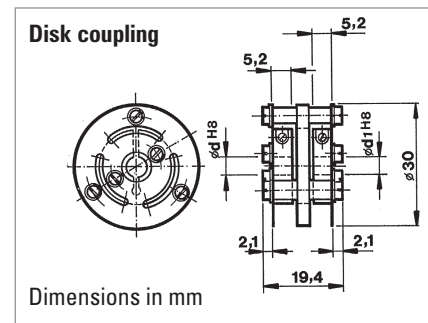
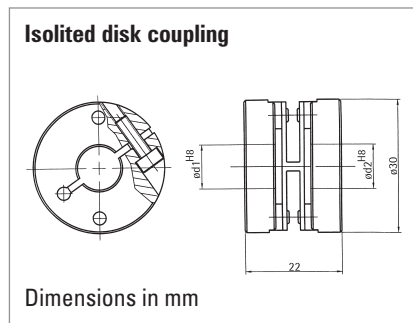


DISK COUPLING

Max. speed		12 000 min ⁻¹
Torque max.		80 Ncm
Moment of inertia		19 gcm ²
Torsional spring constant		150 Nm/rad
Max. angular misalignment		±3.0°
Max. shaft misalignment	radial	±0.4 mm
	axial	±0.4 mm
Max tightening torque of set screws		80 Ncm
Hub diameter d and d ₁		6 mm H 8
Material	coupling body, flange	AlCuMgPb, anodized
	preloaded disc	stainless steel
Weight approx.		14.5 g

Ordering code **0 070 663** suitable for encoder type RI 36, RI 58, AC 58

DIMENSIONAL DRAWINGS



Flexible Couplings



BELLOWS COUPLING

Max. speed		8000 min ⁻¹
Torque max.		80 Ncm
Moment of inertia		9 gcm ²
Torsional spring constant		140 Nm/rad
Max. angular misalignment		±4.0°
Max. shaft misalignment	radial	±0.3 mm
	axial	±0.5 mm
Max tightening torque of set screws		150 Ncm
Material	flange	aluminium
	bellows	stainless steel
Weight		16 g

Hub diameter

12/12 mm

Ordering code **0 070 666**

Suitable for type RI 58, AC 58

10/10 mm

Ordering code **3 520 037**

9.53/9.53 mm

Ordering code **3 520 038**

6/6 mm

Ordering code **3 520 068**

DIMENSIONAL DRAWING

